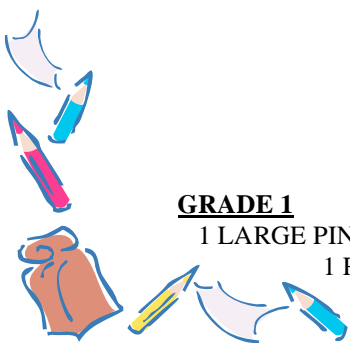


St. Joseph School Supply List 2007-2008



GRADE 1

- 1 LARGE PINK BEVEL ERASER
- 1 RULER, WOOD 12"
- 6 PENCILS - #2 WITH ERASER
- 1 16 CT. CRAYOLA CRAYONS
- CRAYONS
- 1 3x5 100 CT. RULED INDEX CARDS
- 1 SCISSORS -FISKARS CHILDREN
- 4 ELMERS GLUE STICK .77oz.
- 3 PLASTIC 2 POCKET FOLDERS- BLUE, GREEN, YELLOW
- 3- 70 CT SPRL WIDE RLED COMP BOOK - BLUE, GREEN, YELLOW (not perforated)
- 1 10.5 x 5.5 PENCIL CASE

GRADE 2

- 1 RULER, PLASTIC TRANSPARENT 12"/cm
- 6 PENCILS #2 WITH ERASER
- 2 RED PENCILS
- 2 ELMER'S GLUE - SCHOOL 4oz.
- 1- 24 CT. CRAYOLA CRAYONS
- 1- 8 CT. CRAYOLA CLASSIC MARKERS THIN
- 1 SCISSORS- FISKARS CHILDREN
- 1LARGE PINK BEVEL ERASER
- 4 PLASTIC 2 POCKET FOLDERS - BLUE, YELLOW, GREEN, RED
- 4- 70 CT. SPRL WIDE RLED COMP BOOK- RED, BLUE, YELLOW, GREEN (not perforated)
- 1- 10.5 x 5.5 PENCIL CASE
- 1 ELMER'S GLUE STICK .77oz.
- 1 NOTEBOOK PAPER 150ct, WIDE RULED
- 1 HI-LITER MARKER YELLOW
- 1 SOAP, ANTIBACTERAL, GENERIC HAND GEL

GRADE 3

- 1 ELMER'S GLUE - SCHOOL 4 oz
- 1 SCISSORS - FISKARS CHILDREN
- 6 PENCILS #2 WITH ERASER
- 1 24 CT. CRAYOLA CRAYONS
- 1 RULER, WOOD 12"
- 1 8 CT. CRAYOLA CLASSIC MARKERS THIN
- 5- 70 CT. SPRL WIDE RLED COMP BOOK- GRN, RED, PURPLE, BLUE, YELLOW (not perforated)
- 1- 8 CT. CRAYOLA CLASSIC MARKERS BROAD
- 2 RED PENCILS
- 3 PLASTIC 2 POCKET FOLDERS- BLUE, GREEN, PURPLE
- 1- 10.5 x 5.5 PENCIL CASE
- 1 ELMER'S GLUE STICK .77oz

GRADE 4

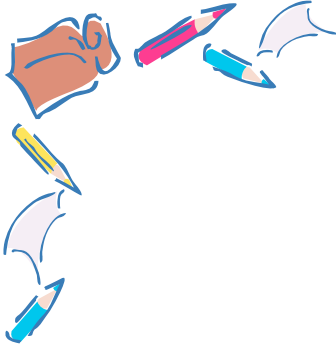
- 2 BLUE ERASABLE MED. PT. PENS
- 1 RULER, WOOD 12"
- 1 10.5 x 5.5 PENCIL CASE
- 6 PENCILS - #2 WITH ERASER
- 2 LARGE PINK BEVEL ERASERS
- 1 24 CT. CRAYOLA CRAYONS
- 1 SCISSORS- FISKARS CHILDREN
- 1- GRAPH PAPER 5 SQ. IN.
- 1- 200 CT. WIDE RULED NOTEBOOK PAPER
- 1- 8 CT. CRAOLA MARKERS CLASSIC THIN
- 1- 8 CT. CRYOLA MARKERS CLASSIC BROAD
- 6- 70 CT. SPRL WIDE RLED COMP BOOK - RED, BLCK, YELLOW, BLUE, GREEN, PRPLE (not perforated)
- 2 RED MED. PT. PENS
- 4 ELMER'S GLUE STICK .77 OZ.
- 1 PROTRACTOR TRANSPARENT
- 2- 100 CT. 3 X 5 RULED INDEX CARDS
- 1 PLASTIC 2 POCKET FOLDER
- 1 BETTERLINE 13 POCKET FOLDER

GRADE 5

- 6 PENCILS - #2 WITH ERASER
- 2 BLUE ERASABLE MED. PT. PENS
- 2 RED INK PENS
- 1- 200 CT. WIDE RULED NOTEBOOK PAPER
- 1 -24 CT. CRAYOLA CRAYONS
- 1 RULER, WOOD 12"
- 7- 70 CT. SPRL WIDE RLED COMP BOOK - RED, BLUE, GREEN, BLACK, YELLOW, PURPLE, MAROON (not perforated)
- 1- 8 CT. CRAYOLA MARKERS CLASSIC THIN
- 1- 8 CT. CRAYOLA MARKERS CLASSIC BROAD
- 2 ELMER'S GLUE STICK .77oz.
- 1 SCISSORS - CUTRITE 8"
- 1 10.5 x 5.5 PENCIL CASE
- 1 ¾" SCOTCH MAGIC TAPE
- 1 8 CT. CRAYOLA COLORED PENCILS
- 2- 100 CT. 3 X 5 RULED INDEX CARDS
- 1 PLASTIC 2 POCKET FOLDER
- 1 BETTERLINE 13 POCKET FOLDER

NOTE: PLEASE 4TH AND 5TH GRADE NO MECHANICAL PENCILS, PER TEACHER REQUEST.

St. Joseph School Supply List 2007-2008



GRADE 6

- 6 RED INK PENS
- 10 BLACK INK PENS
- 1 - 8 CT. CRAYOLA MARKERS CLASSIC BROAD
- 1 PROTRACTOR, TRANSPARENT
- 10 PENCILS - #2 WITH ERASER
- 6 - 70 CT. SPRL WIDE RLED COMP BOOK - YELW, PRPLE, GREEN, RED, BLUE, BLCK (not perforated)
- 1 SCOTCH TAPE #144
- 1 12 CT. CRAYOLA COLORED PENCILS
- 1 BETTERLINE 13 POCKET FOLDER
- 1 BETTERLINE 7 POCKET FOLDER
- 1 NYLON PENCIL CASE
- 1 ELMER'S GLUE STICK .77oz.
- 1 PLASTIC 2 POCKET FOLDER
- 2 - 5-TAB INDEX DIVIDERS
- 3- 200 CT. WIDE RULED NOTEBOOK PAPER
- 1 SCISSORS, CUTRITE 8"
- 1 RULER, TRANSPARENT 12"/cm
- 1 HIGHLIGHTER MARKER YELLOW
- 3 - 100 CT. 3 X 5 RULED INDEX CARDS
- 1 - 3 RING BINDER 1 1/2 "CLR VIEW"
- 1 - 3 RING BINDER SOFT COVER
- 1- 2 POCKET FOLDER (HEAVY DUTY)
- 2- PENCIL SHARPENERS WITH COVER
- 1 - ERASER PINK-LARGE
- 1- GRAPH PAPER 8.5x11 PAD
- 4- MECHANICAL SCRIPTO PENCILS (INCL. EXTRA LEAD)



GRADE 7

- 4 RED INK PENS
- 2 BLUE INK. PENS
- 2 BLACK INK PENS
- 1 - 8 CT. CRAYOLA MARKERS CLASSIC BROAD
- 1 PROTRACTOR, TRANSPARENT
- 6 PENCILS #2 WITH ERASER
- 6 - 70 CT. SPRL WIDE RLED. BOOK-RED, BLUE, BLCK, YELW, GREEN, PURPLE (not perforated)
- 1 SCOTCH TAPE #144
- 1 - 12 CT. CRAYOLA COLORED PENCILS
- 1 PLASTIC PENCIL CASE
- 1 ELMER'S GLUE STICK .77oz.
- 1 SCISSORS, CUTRITE 8"
- 3- 200 CT. WIDE RULED NOTEBOOK PAPER
- 1 RULER, TRANSPARENT 12in & cm.
- 1 HIGHLIGHTER MARKER YELLOW
- 1 - 100 CT. 3 X 5 RULED INDEX CARDS
- 1 BETTERLINE 13 POCKET FOLDER
- 1 BETTERLINE 7 POCKET FOLDER

GRADE 8

- 4 RED INK PENS
- 2 BLUE INK PENS
- 2 BLACK INK PENS
- 1- 8 CT. CRAYOLA CRAYON MARKERS CLASSIC THIN
- 1 PROTRACTOR, TRANSPARENT
- 6 PENCILS- #2 WITH ERASERS
- 6 - 70 CT. SPRL WIDE RLED. BOOK-YELW, PRPLE, GREEN, RED, BLUE, BLACK (not perforated)
- 1 SCOTCH TAPE #144
- 1 - 12 CT. CRAYOLA COLORED PENCILS
- 1 PLASTIC PENCIL CASE
- 1 ELMER'S GLUE STICK .77oz.
- 1 SCISSORS, CUTRITE 8"
- 2 - 5-TAB INDEX DIVIDERS
- 1 - 3 RING BINDER 1 1/2" CLEAR VIEW
- 3- 200 CT. WIDE RULED NOTEBOOK PAPER
- 1 RULER, TRANSPARENT 12"/cm.
- 1 HIGHLIGHTER MARKER YELLOW
- 1 - 100 CT. 3 X 5 RULED INDEX CARDS
- 1 BETTERLINE 13 POCKET FOLDER
- 1 BETTERLINE 7 POCKET FOLDER
- 2 PLASTIC 2 POCKET FOLDER